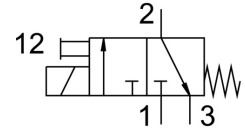
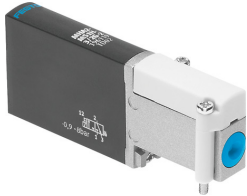


Air solenoid valve MHA2-M1H-3/2G-2

Part number: 196118

FESTO



Data sheet

Feature	Value
Valve function	3/2, closed, monostable
Actuation type	Electrical
Width	10 mm
Standard nominal flow rate	100 l/min
Pneumatic working port	Sub-base
Operating voltage	24V DC
Operating pressure	-0.09 MPa ... 0.8 MPa
Operating pressure	-0.9 bar ... 8 bar
Structural design	Pressure-relieved poppet valve
Reset method	Mechanical spring
Degree of protection	IP65
Certification	c UL us - Recognized (OL)
Nominal width	2 mm
Width dimension	14 mm
Note on grid dimension	Minimum distance between the valves is 4 mm
Type code	MH2
Exhaust air function	With flow control option
Sealing principle	Soft
Mounting position	Any
Manual override	Non-detenting
Type of control	Direct
Flow direction	Reversible with restrictions
Symbol	00991308
Lap	Underlap
Operating pressure, reversible	-0.09 MPa ... 0.1 MPa
Operating pressure, reversible	-0.9 bar ... 1 bar
Operating pressure, reversible	-13.05 psi ... 14.5 psi
Max. switching frequency	130 Hz
Switching time off	3.5 ms
On switching time	7 ms
Duty cycle	100%
Coil characteristics	24 V DC: 2.88 W
Permissible voltage fluctuations	+/- 10 %
Operating medium	Compressed air as per ISO 8573-1:2010 [7:4:4]
Information on operating and pilot media	Operation with oil lubrication possible (required for further use)

Feature	Value
Vibration resistance	Transport application test with severity level 2 as per FN 942017-4 and EN 60068-2-6
Shock resistance	Shock test with severity level 2 as per FN 942017-5 and EN 60068-2-27
Corrosion resistance class (CRC)	2 - Moderate corrosion stress
Temperature of medium	-5 °C ... 40 °C
Ambient temperature	-5 °C ... 40 °C
Product weight	60 g
Electrical connection	2-pin Plug
Type of mounting	On sub-base
Pneumatic connection 1	Sub-base
Pneumatic connection 2	Sub-base
Pneumatic connection 3	Sub-base
Note on materials	Free of copper and PTFE RoHS-compliant
Seals material	HNBR NBR
Housing material	Die-cast zinc Coated
Material of screws	Steel Galvanized